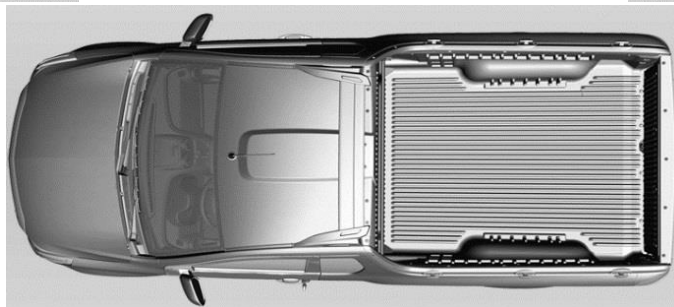
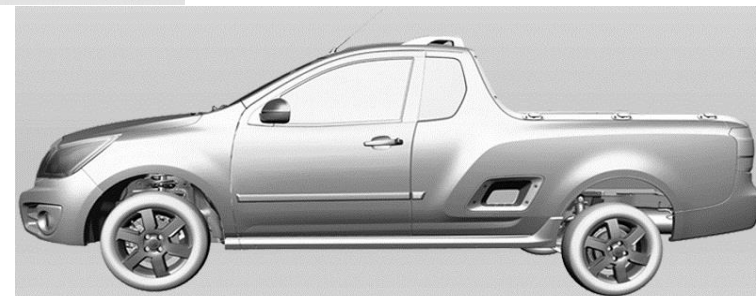
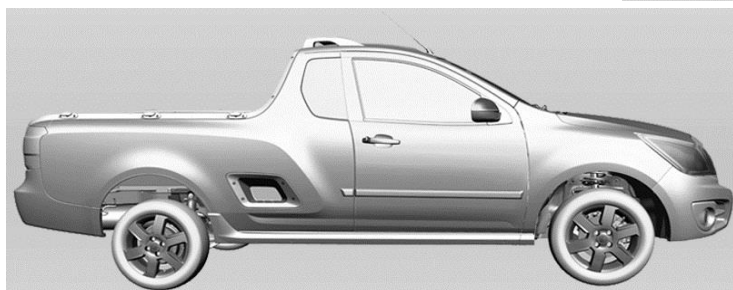


Service Schedule Chevrolet Utility



**COMPLETE
CARE**

- 1. This Service Schedule will have preference over the Owner's Manual and Warranty & Service Guide**
- 2. Refer to the Warranty and Service Guide for Severe Driving Conditions.**
- 3. Consult the Owner/Customer prior to any additional work being carried out as an additional cost will be charged for items not covered under warranty.**
- 4. ALL SERVICE INTERVALS ARE LINKED TO KILOMETERS AND MONTHS, WHICHEVER OCCURS FIRST.**



Service Schedule

Chevrolet Utility



COMPLETE CARE

R = Replace A = Adjust T = Torque L = Lubricate C = Clean

I = Inspection - after inspection clean and correct, or replace as necessary

Utility 1.4 and 1.8 - Petrol

SERVICE INTERVAL every KMs (x1000)		15	30	45	60	75	90	105	120	135	150	165	180	195	210	225	240	255	270	285	300	315	330	345	360	
or MONTHS, whichever occurs first		12	24	36	48	60	72	84	96	108	120	132	144	156	168	180	192	204	216	228	240	252	264	276	288	
ENGINE	1	Engine Oil and Filter	R	R	R	R	R	R	R	R	R	R	R	R	R	R	R	R	R	R	R	R	R	R	R	R
	2	Fuel Filter	-	R	-	R	-	R	-	R	-	R	-	R	-	R	-	R	-	R	-	R	-	R	-	R
	3	Check and Inspect Positive crankcase ventilation (PCV) system	I	I	I	I	I	I	I	I	I	I	I	I	I	I	I	I	I	I	I	I	I	I	I	I
	4	Fuel leakage at tank, cap and pipes	I	I	I	I	I	I	I	I	I	I	I	I	I	I	I	I	I	I	I	I	I	I	I	I
	5	Air Filter Element	I/C	R	I/C	R	I/C	R	I/C	R	I/C	R	I/C	R	I/C	R	I/C	R	I/C	R	I/C	R	I/C	R	I/C	R
	6	Spark plugs	-	R	-	R	-	R	-	R	-	R	-	R	-	R	-	R	-	R	-	R	-	R	-	R
	7	Check and inspect camshaft chain and guides	-	-	-	-	R	-	-	-	-	R	-	-	-	-	R	-	-	-	-	R	-	-	-	-
	8	All engine drive belts for tension & damage and check pulley condition (replace if needed)	I	I	I	I	I	I	I	I	I	I	I	I	I	I	I	I	I	I	I	I	I	I	I	I
	9	Run engine through operating range & check for excessive smoke	I	I	I	I	I	I	I	I	I	I	I	I	I	I	I	I	I	I	I	I	I	I	I	I
	10	Coolant system for leaks & check coolant concentration (50% glycol)	I	I	I	I	I	I	I	I	I	I	I	I	I	I	I	I	I	I	I	I	I	I	I	I
	11	Coolant concentration (50% glycol)	Replace every 60 months.																							
	12	Valve Clearances	-	-	-	-	-	-	-	-	-	-	-	-	-	-	-	-	-	-	-	-	-	-	-	-
	13	Radiator core and fan operation	I	I	I	I	I	I	I	I	I	I	I	I	I	I	I	I	I	I	I	I	I	I	I	I
	14	Exhaust system & mountings & hoses & pipes in engine comp. for tightness or damage	I	I	I	I	I	I	I	I	I	I	I	I	I	I	I	I	I	I	I	I	I	I	I	I
SERVICE BRAKE	15	Brake pedal function, travel and free play	I	I	I	I	I	I	I	I	I	I	I	I	I	I	I	I	I	I	I	I	I	I	I	
	16	Brake fluid level	I	I	I	I	I	I	I	I	I	I	I	I	I	I	I	I	I	I	I	I	I	I	I	
	17	Brake fluid	Replace every 24 months.																							
	18	Front disc brake pads & discs for wear	I	I	I	I	I	I	I	I	I	I	I	I	I	I	I	I	I	I	I	I	I	I	I	
CLUTCH	19	Handbrake linings & drums for wear	I	I	I	I	I	I	I	I	I	I	I	I	I	I	I	I	I	I	I	I	I	I	I	
	20	Brake pipes & hoses for leaks, loose connections or damage	I	I	I	I	I	I	I	I	I	I	I	I	I	I	I	I	I	I	I	I	I	I	I	
	21	Clutch pedal function, travel and free play & fluid leaks	I	I	I	I	I	I	I	I	I	I	I	I	I	I	I	I	I	I	I	I	I	I	I	
	22	Clutch fluid level*	-	-	-	-	-	-	-	-	-	-	-	-	-	-	-	-	-	-	-	-	-	-	-	
TRANSMISSION	23	Clutch cable*	I	I	I	I	I	I	I	I	I	I	I	I	I	I	I	I	I	I	I	I	I	I	I	
	24	Clutch fluid*	Replace every 24 months.																							
	25	Check & Inspect transmission for leaks	I	I	I	I	I	I	I	I	I	I	I	I	I	I	I	I	I	I	I	I	I	I	I	
TRANSMISSION	26	Manual transmission fluid	I	I	I	I	I	I	I	I	I	I	I	I	I	I	I	I	I	I	I	I	I	I	I	
	27	Front drive axle CV joints, condition of rubber dust covers	I	I	I	I	I	I	I	I	I	I	I	I	I	I	I	I	I	I	I	I	I	I	I	

* Where fitted

Updated: September 2016

Service Schedule

Chevrolet Utility



**COMPLETE
CARE**

R = Replace A = Adjust T = Torque L = Lubricate C = Clean

I = Inspection - after inspection clean and correct, or replace as necessary

Utility 1.4 and 1.8 - Petrol																									
SERVICE INTERVAL every KMs (x1000)		15	30	45	60	75	90	105	120	135	150	165	180	195	210	225	240	255	270	285	300	315	330	345	360
or MONTHS, whichever occurs first		12	24	36	48	60	72	84	96	108	120	132	144	156	168	180	192	204	216	228	240	252	264	276	288
STEERING	28	Steering wheel play and function																							
	29	Power steering oil level and leaks																							
	30	Steering rack and ball joint rubber boots																							
	31	Wheel alignment inspection - offered to customer Recommended every service- cost for customer's account																							
PARKING BRAKE	32	Parking brake function - lever travel & ratchet for damage																							
	33	Parking brake																							
	34	Suspension front & rear - strut rubbers, bushes, tie-rod ends & link arms																							
	35	Shock absorbers for leaks and looseness																							
	36	Cab mountings for looseness and damage																							
WHEELS	37	Tyre Pressure - Check and correct																							
	38	Inspect tyres & rims for damage																							
	39	Wheel bearing (front & rear) - Inspect for bearing play																							
	40	Rotate tyres & torque wheel nuts as per specification																							
ELECTRICAL EQUIPMENT	41	Vehicle systems - Check all ECUs for DTCs & reset service interval*																							
	42	Starter and alternator function / output																							
	43	Battery electrolyte level and specific gravity*																							
	44	Wiring harness and terminals for looseness or damage																							
	45	Lights, hooter, instruments, air con, radio, turn signal, wiper blades & w/screen washers																							
	46	Remote key battery*																							
	47	Airbag system and Airbag warning light, visual inspection																							
BODY	48	Seatbelts function and damage																							
	49	Inspect chassis and body for corrosion Attach copy of Sheet to Job Card at every service interval																							
	50	Bolts and nuts on chassis and body																							
	51	Door, Bonnet, Tail gate, locks and door restraints Check/Adjust/Clean/Lubricate																							
	52	Pollen filter*																							
	53	Air conditioner drain pipe*																							
54		Check for open RECALLS /SERVICE CAMPAIGNS Check and complete repair (if required) at every service interval																							
55		Road Test																							

* Where fitted

Service Schedule

Chevrolet Utility



COMPLETE CARE

R = Replace A = Adjust T = Torque L = Lubricate C = Clean

I = Inspection - after inspection clean and correct, or replace as necessary

Utility 1.3 - Diesel																											
SERVICE INTERVAL every KMs (x1000)		15	30	45	60	75	90	105	120	135	150	165	180	195	210	225	240	255	270	285	300	315	330	345	360		
or MONTHS, whichever occurs first		12	24	36	48	60	72	84	96	108	120	132	144	156	168	180	192	204	216	228	240	252	264	276	288		
ENGINE	1	Engine Oil and Filter	R	R	R	R	R	R	R	R	R	R	R	R	R	R	R	R	R	R	R	R	R	R	R	R	
	2	Fuel Filter	I	R	I	R	I	R	I	R	I	R	I	R	I	R	I	R	I	R	I	R	I	R	I	R	
	3	Check and Inspect Positive crankcase ventilation (PCV) system	I/C	I/C	I/C	I/C	I/C	I/C	I/C	I/C	I/C	I/C	I/C	I/C	I/C	I/C	I/C	I/C	I/C	I/C	I/C	I/C	I/C	I/C	I/C	I/C	
	4	Fuel leakage at tank, cap and pipes	I	I	I	I	I	I	I	I	I	I	I	I	I	I	I	I	I	I	I	I	I	I	I	I	
	5	Air Filter Element	I	I	I	I	I	I	I	I	I	I	I	I	I	I	I	I	I	I	I	I	I	I	I	I	
	6	Spark plugs	I/C	R	I/C	R	I/C	R	I/C	R	I/C	R	I/C	R	I/C	R	I/C	R	I/C	R	I/C	R	I/C	R	I/C	R	
	7	Check and inspect camshaft chain and guides	I	I	I	I	I	I	I	I	I	R	I	I	I	I	I	I	I	I	I	R	I	I	I	I	
	8	All engine drive belts for tension & damage and check pulley condition (replace if needed)	I	I	I	I	I	I	I	I	I	I	I	I	I	I	I	I	I	I	I	I	I	I	I	I	
	9	Run engine through operating range & check for excessive smoke	I	I	I	I	I	I	I	I	I	I	I	I	I	I	I	I	I	I	I	I	I	I	I	I	
	10	Coolant system for leaks & check coolant concentration (50% glycol)	R	R	R	R	R	R	R	R	R	R	R	R	R	R	R	R	R	R	R	R	R	R	R	R	
	11	Coolant concentration (50% glycol)	Replace every 60 months.																								
	12	Valve Clearances	I	I	I	I	I	I	I	I	I	I	I	I	I	I	I	I	I	I	I	I	I	I	I	I	
	13	Radiator core and fan operation	I	I	I	I	I	I	I	I	I	I	I	I	I	I	I	I	I	I	I	I	I	I	I	I	
	14	Exhaust system & mountings & hoses & pipes in engine comp. for tightness or damage	I	I	I	I	I	I	I	I	I	I	I	I	I	I	I	I	I	I	I	I	I	I	I	I	
SERVICE BRAKE	15	Brake pedal function, travel and free play	I	I	I	I	I	I	I	I	I	I	I	I	I	I	I	I	I	I	I	I	I	I	I		
	16	Brake fluid level	I	I	I	I	I	I	I	I	I	I	I	I	I	I	I	I	I	I	I	I	I	I	I		
	17	Brake fluid	Replace every 24 months.																								
	18	Front disc brake pads & discs for wear	I	I	I	I	I	I	I	I	I	I	I	I	I	I	I	I	I	I	I	I	I	I	I		
19	Handbrake linings & drums for wear	I	I	I	I	I	I	I	I	I	I	I	I	I	I	I	I	I	I	I	I	I	I	I			
20	Brake pipes & hoses for leaks, loose connections or damage	I	I	I	I	I	I	I	I	I	I	I	I	I	I	I	I	I	I	I	I	I	I	I			
CLUTCH	21	Clutch pedal function, travel and free play & fluid leaks	I	I	I	I	I	I	I	I	I	I	I	I	I	I	I	I	I	I	I	I	I	I			
	22	Clutch fluid level*	-	-	-	-	-	-	-	-	-	-	-	-	-	-	-	-	-	-	-	-	-	-			
	23	Clutch cable*	I	I	I	I	I	I	I	I	I	I	I	I	I	I	I	I	I	I	I	I	I	I			
24	Clutch fluid*	Replace every 24 months.																									
TRANSMISSION	25	Check & Inspect transmission for leaks	I	I	I	I	I	I	I	I	I	I	I	I	I	I	I	I	I	I	I	I	I	I			
	26	Manual transmission fluid	I	I	I	I	I	I	I	I	I	I	I	I	I	I	I	I	I	I	I	I	I	I			
	27	Front drive axle CV joints, condition of rubber dust covers	I	I	I	I	I	I	I	I	I	I	I	I	I	I	I	I	I	I	I	I	I	I			

* Where fitted

Service Schedule

Chevrolet Utility



**COMPLETE
CARE**

R = Replace A = Adjust T = Torque L = Lubricate C = Clean

I = Inspection - after inspection clean and correct, or replace as necessary

Utility 1.3 - Diesel																									
SERVICE INTERVAL every KMs (x1000)		15	30	45	60	75	90	105	120	135	150	165	180	195	210	225	240	255	270	285	300	315	330	345	360
or MONTHS, whichever occurs first		12	24	36	48	60	72	84	96	108	120	132	144	156	168	180	192	204	216	228	240	252	264	276	288
STEERING	28	Steering wheel play and function																							
	29	Power steering oil level and leaks																							
	30	Steering rack and ball joint rubber boots																							
	31	Wheel alignment inspection - offered to customer Recommended every service- cost for customer's account																							
PARKING BRAKE	32	Parking brake function - lever travel & ratchet for damage																							
	33	Parking brake																							
	34	Suspension front & rear - strut rubbers, bushes, tie-rod ends & link arms																							
	35	Shock absorbers for leaks and looseness																							
	36	Cab mountings for looseness and damage																							
WHEELS	37	Tyre Pressure - Check and correct																							
	38	Inspect tyres & rims for damage																							
	39	Wheel bearing (front & rear) - Inspect for bearing play																							
	40	Rotate tyres & torque wheel nuts as per specification																							
ELECTRICAL EQUIPMENT	41	Vehicle systems - Check all ECUs for DTCs & reset service interval*																							
	42	Starter and alternator function / output																							
	43	Battery electrolyte level and specific gravity*																							
	44	Wiring harness and terminals for looseness or damage																							
	45	Lights, hooter, instruments, air con, radio, turn signal, wiper blades & w/screen washers																							
	46	Remote key battery*																							
	47	Airbag system and Airbag warning light, visual inspection																							
BODY	48	Seatbelts function and damage																							
	49	Inspect chassis and body for corrosion Attach copy of Sheet to Job Card at every service interval																							
	50	Bolts and nuts on chassis and body																							
	51	Door, Bonnet, Tail gate, locks and door restraints Check/Adjust/Clean/Lubricate																							
	52	Pollen filter*																							
	53	Air conditioner drain pipe*																							
	54	Check for open RECALLS /SERVICE CAMPAIGNS Check and complete repair (if required) at every service interval																							
	55	Road Test																							

* Where fitted

Updated: September 2016